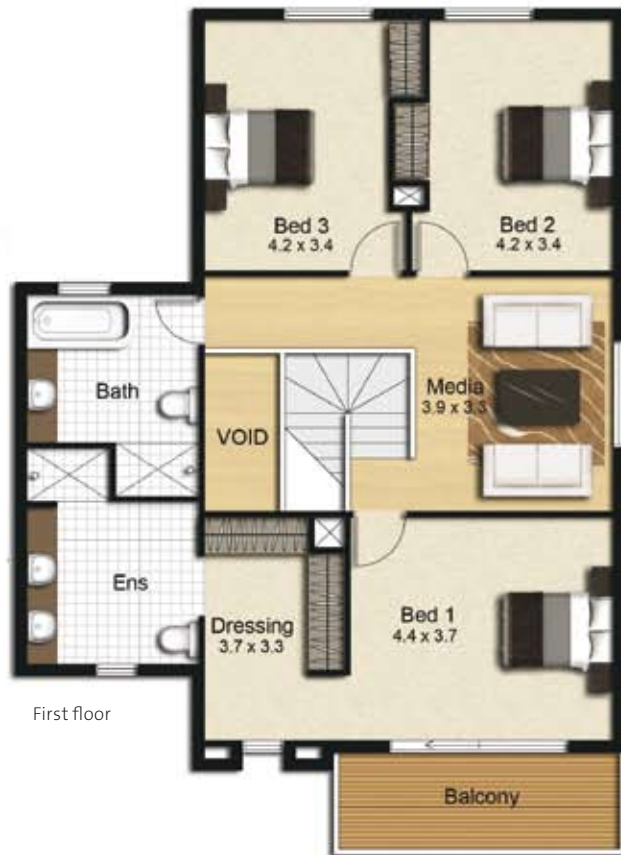


Savoy 285

□ Longridge Homes



Contemporary option



Overall Dimensions: 13.0m x 17.1m

Ground 118m² Upper 102m² Void 8m² Garage 37m² Porch 12m² Balcony 8m² **Total Area 286m²**

All dimensions/areas are approximate only. Refer to a consultant for more accurate dimensions.